



**ALASKA DIVISION OF HOMELAND SECURITY &  
EMERGENCY MANAGEMENT**

**SITUATION REPORT 20-353 • DEC 18, 2020**



Toll-Free 1.800.478.2337

Anchorage Area 907.428.7000

SEOC 907.428.7100

<p><b><u>SEOC Preparedness Level</u></b></p> <p>Level 3 - Ongoing Active Response - 2020 December Southeast Storm</p>	<p><a href="http://ready.alaska.gov">http://ready.alaska.gov</a></p>	<p><b><u>National Terrorism Advisory System:</u></b></p> <p>View this site for the latest NTAS bulletin: <a href="#">read the current NTAS Bulletin here.</a></p>
<p><b><u>Maritime Security (MARSEC)</u></b></p> <p>Level:1-Minimum Appropriate Security Measures</p>	<p><b>WHO Novel Coronavirus Pandemic (COVID-19):</b></p> <p><a href="#">2019 Novel Coronavirus</a></p>	<p><b><u>Alaska Military Installation Force Protection Level:</u></b> FPCON Bravo</p>

(Significant changes from previous situation reports are in red.)

**THREAT LEVEL CHANGES:**

None

**Significant Issues:**

**2020 December Southeast Storm Disaster:**

SEOC remains at Level 3 and is actively engaged in response and initiation of recovery operations to Southeast Alaska communities impacted by the recent storm under Governor Dunleavy's Declaration of Disaster.

**Haines:**

The State Emergency Operations Center State Division Supervisor deployed to Haines will demobilize today as Haines transitions from response to recovery operations.

Haines has a Winter Storm Warning in effect through Saturday morning.

With the area of Beach Road continuing to be at extreme risk for landslide, Haines Borough Emergency Operations Center is working with the Alaska Division of Geological and Geophysical Surveys and Alaska Department of Transportation and Public Facilities to develop a scope of work for a more definitive assessment of community landslide.

Red Cross sheltered 12 survivors overnight in non-congregate shelters, while additional survivors are housed with family, neighbors, friends. Survivor feeding operations is transitioning from active meal preparation to grocery store gift cards for survivors. Survivor case management for Mass Care and recovery needs has begun. Clean up kits, rental, and utility assistance are being distributed.

Almost 200 volunteers from the Red Cross, Salvation Army, United Way of Southeast, Tribal organizations, local churches, Haines, and other Alaska communities are supporting Mass Care operations in Haines and other Southeast communities.

Supplemental mental health, law enforcement, and security support continues in the community.

### **Other Southeast Alaska Communities:**

Operational planning for a Preliminary Damage Assessment, in coordination with FEMA, is underway.

### **Coronavirus (COVID-19) Pandemic:**

A unified command has been established at the SEOC. The SEOC continues to support statewide response to COVID-19.

### **State of Alaska Department of Health and Social Services (DHSS)**

DHSS is operating as the Medical Branch under the State EOC/Unified Command.

For more information about the outbreak refer to:

<https://covid19.alaska.gov/>

<https://www.cdc.gov/coronavirus/2019-ncov/index.html>

The Alaska DHSS website is located at <http://dhss.alaska.gov/Pages/default.aspx>

### **NTAS BULLETIN**

To read current advisories, select the link below.

<https://www.dhs.gov/national-terrorism-advisory-system>

### **Travel Alerts and Conditions**

COVID-19 Health Orders may affect travel. Check <https://covid19.alaska.gov/> for current Health Orders.

For current driving conditions dial 511 or link to <http://511.alaska.gov/>

### **Recent Earthquakes**

USGS Earthquake Information: <http://earthquake.usgs.gov/>

National Tsunami Warning Center: <http://ntwc.arh.noaa.gov/>

### **Alaska Volcanoes**

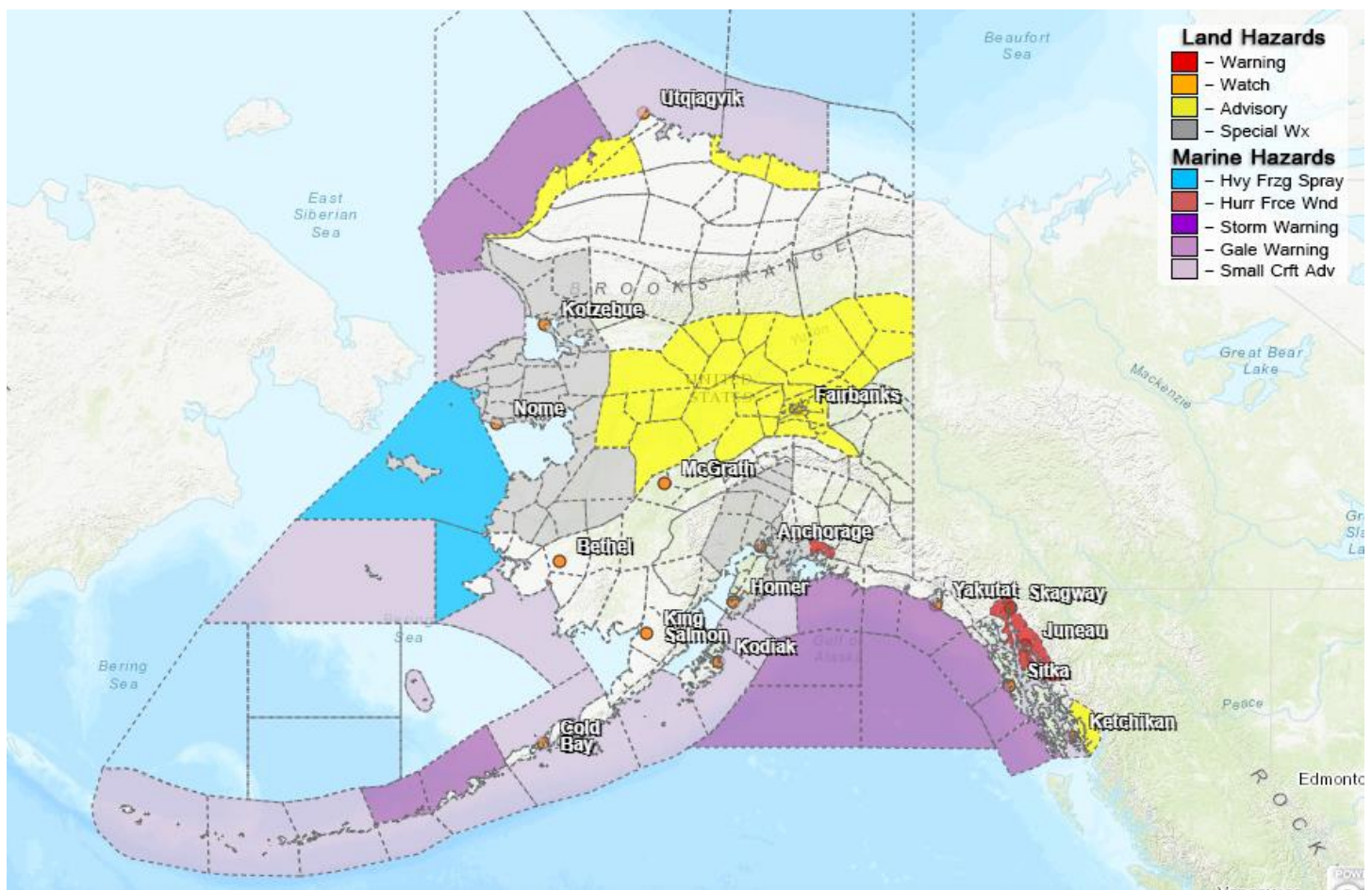
For Alaska Volcano updates, go to: <https://www.avo.alaska.edu/>

### **Air Quality Index (AQI) Advisories**

For the most up to date Air Quality Index Advisories:

<http://dec.alaska.gov/Applications/Air/airtoolsweb/Home/Index>

## Significant Weather:



A Blizzard Warning is in effect for the Northeast Prince William Sound, including Thompson Pass until noon today. Total snow accumulations of 4 to 8 inches with winds gusting as high as 60 mph are expected.

A Winter Storm Warning is in effect for the following areas:

- Haines Borough, Lynn Canal, Taiya Inlet, and the Klondike Highway until 5:00 A.M. tomorrow. Heavy snow is expected with total snow accumulations of 5 to 9 inches through this afternoon along with winds gusting as high as 45 mph.
- Juneau Borough & Northern Admiralty Island until 9:00 A.M. today. Heavy snow is expected with additional accumulations of 2 inches this morning north of Auke Bay.

Winter Weather Advisories are in effect for the following areas:

- Central Beaufort Sea Coast until 3:00 P.M. today. Winds gusting as high as 40 mph will cause areas of blowing and drifting snow. Strong winds combined with low temperatures will produce wind chill values near 50 below.
- Western Arctic Coast until 6:00 P.M. today. Winds gusting as high as 45 mph will cause areas of blowing and drifting snow. Strong winds combined with low temperatures will produce wind chill values near 50 below.
- Misty Fjords until 6:00 P.M. today. Total snow accumulations of 6 to 8 inches are expected.
- Upper Koyukuk Valley until 3:00 P.M. today. Strong winds and blowing snow are expected. Winds gusting as high as 45 mph will cause areas of blowing and drifting snow, reducing visibility. Wind chill values of 40 to 50 below zero are expected.

A Wind Chill Advisory is in effect for much of the Central Interior until 3:00 P.M. today. Cold air and sustained wind speeds of 15 mph or more will create low wind chills. Expect wind chills to range from 40 to 59 below zero.

A Special Weather Statement has been issued for the following areas:

- Southcentral Alaska. Light snow is expected across much of Southcentral on Saturday. Snow accumulations will vary from as little as a trace amount in lower elevations around Anchorage to 3 - 6 inches for the Eastern Kenai Peninsula.
- West Coast / Western Interior. A potentially strong winter storm is possible Monday through Wednesday next week. This storm is expected to move into the Y-K Delta and Northern Bering Sea and then continue north. Possible impacts may include locally heavy snowfall, strong winds, and areas of blowing snow, and reduced visibility.

For more information and the most current weather, Watches / Warnings / Advisories go to:  
<http://www.weather.gov/arh>

### **Avalanche Forecast:**



- Areas near Cordova, Haines, Valdez, and along the Richardson Highway with Moderate risk.

Check the Avalanche Forecast Center closest to your area for the most up to date information on Avalanche potential. <https://alaskasnow.org/> or <https://www.weather.gov/afc/avalanche>

### **Spills of Oil and Hazardous Substances**

The ADEC Spill Prevention and Response page is located at:

<http://dec.alaska.gov/spar/ppr/spill-information/response/>

### **Alaska Cyber Security Information**

State Employees may sign up for cybersecurity notifications and alerts at

<https://oit.alaska.gov/Security>

**The Next Situation Report:** will be 21 December 2020. A significant change in the situation or the threat level will prompt an interim report.

This report is posted on the internet at <https://ready.alaska.gov/sitrep>. To register for email distribution, go to <http://list.state.ak.us/mailman/listinfo/dhsem.situation.report>. Direct questions regarding this report to the SEOC at 907-428-7100 or [seoc@alaska.gov](mailto:seoc@alaska.gov).